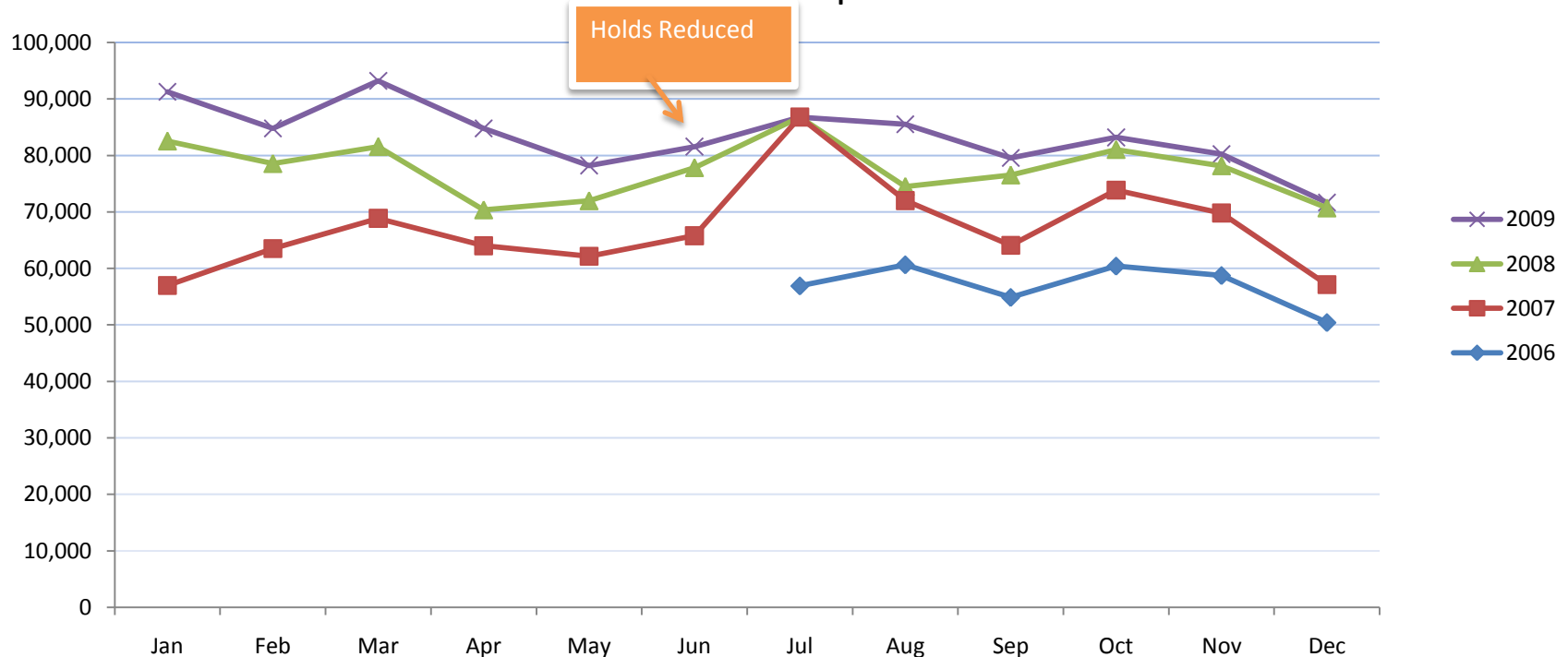


Number of Holds Placed July 2006 through Dec 2009 month by month comparison



						Jul '06	Aug '06	Sep '06	Oct '06	Nov '06	Dec '06
						56,911	60,650	54,866	60,417	58,745	50,418
Jan '07	Feb '07	Mar '07	Apr '07	May '07	Jun '07	Jul '07	Aug '07	Sep '07	Oct '07	Nov '07	Dec '07
* 56962	63,505	68,858	64,008	62,162	65,786	86,791	72,005	64,091	73,871	69,806	57,117
Jan '08	Feb '08	Mar '08	Apr '08	May '08	Jun '08	Jul '08	Aug '08	Sep '08	Oct '08	Nov '08	Dec '08
82,536	78,553	81,558	70,363	71,974	77,830	86,791	74,503	76,535	81,038	78,166	70,697
Jan '09	Feb '09	Mar '09	Apr '09	May '09	Jun '09	Jul '09	Aug '09	Sep '09	Oct '09	Nov '09	Dec '09
91,249	84,789	93,205	84,775	78,216	81,562	86,791	85,525	79,552	83,194	80,244	71,680

* estimate